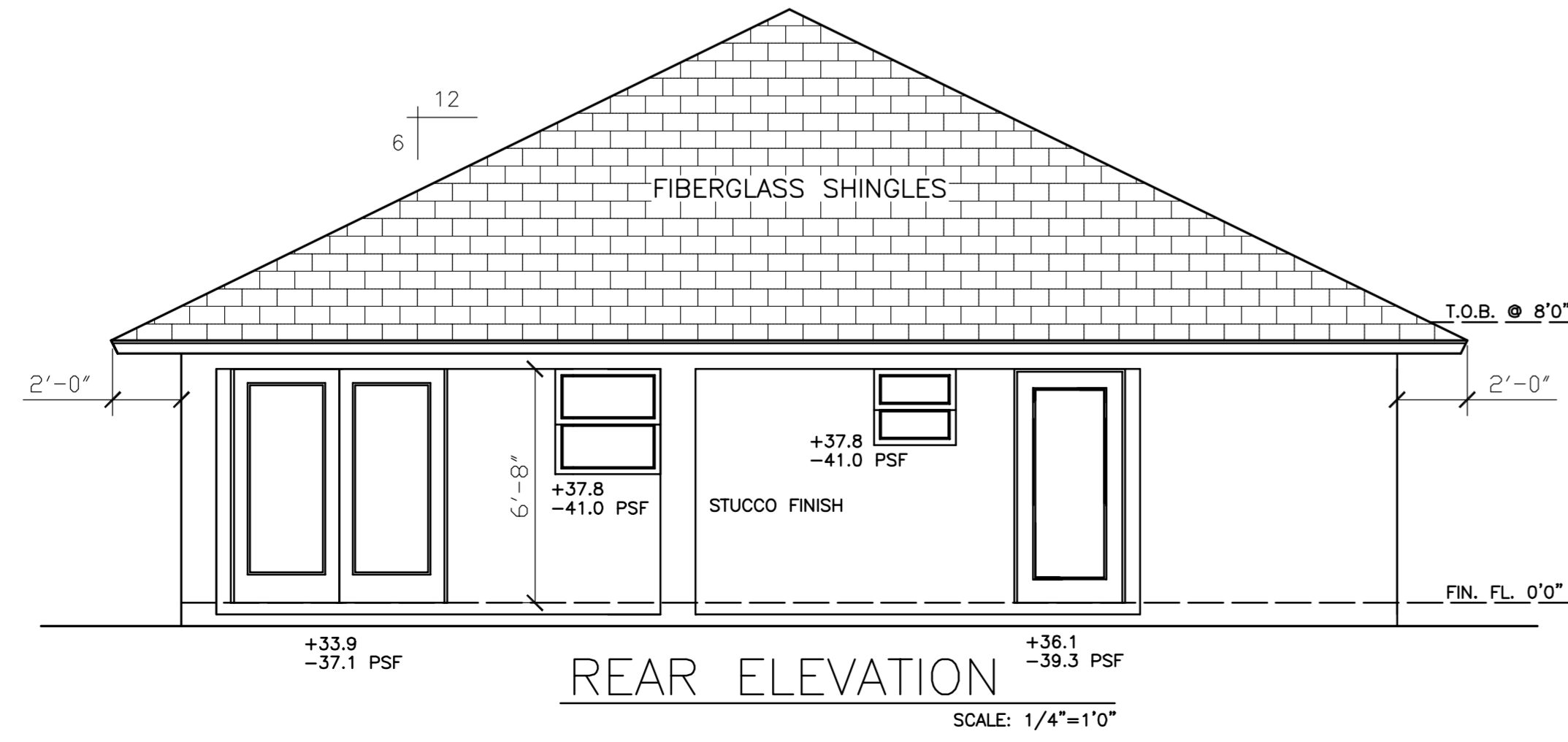
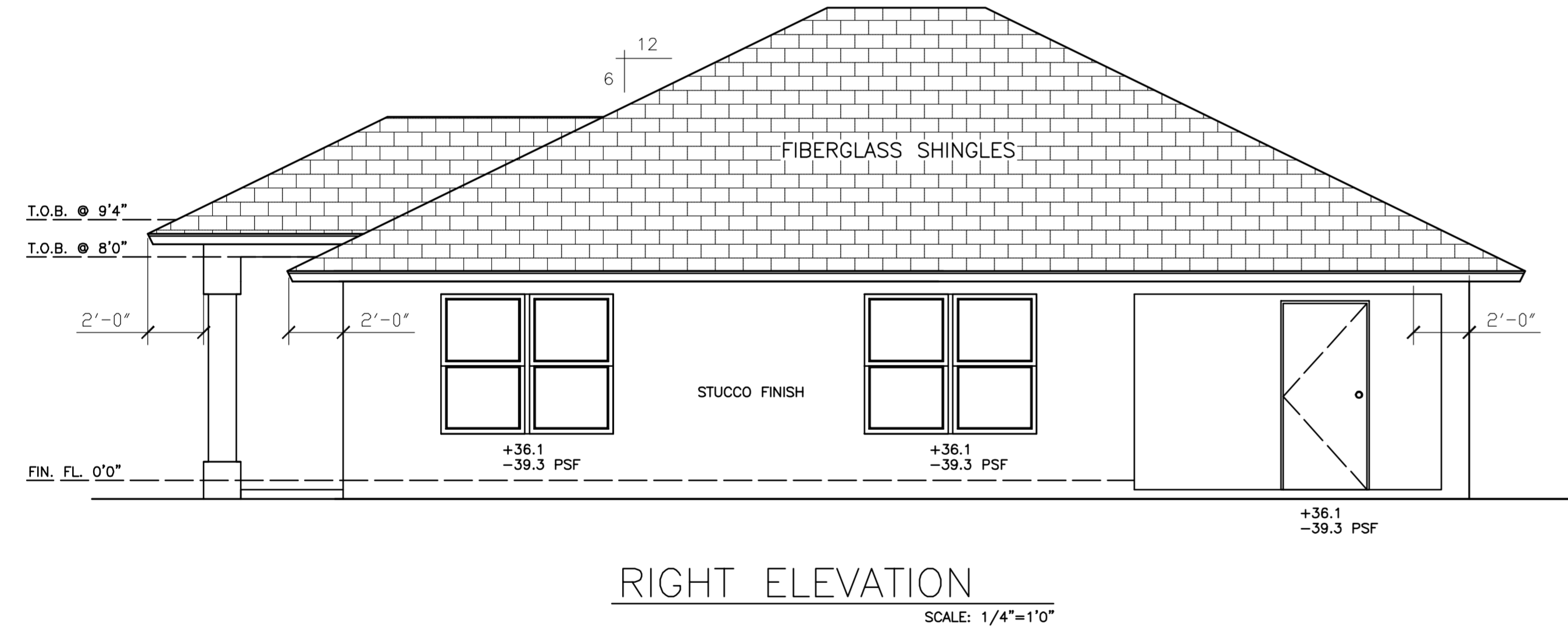
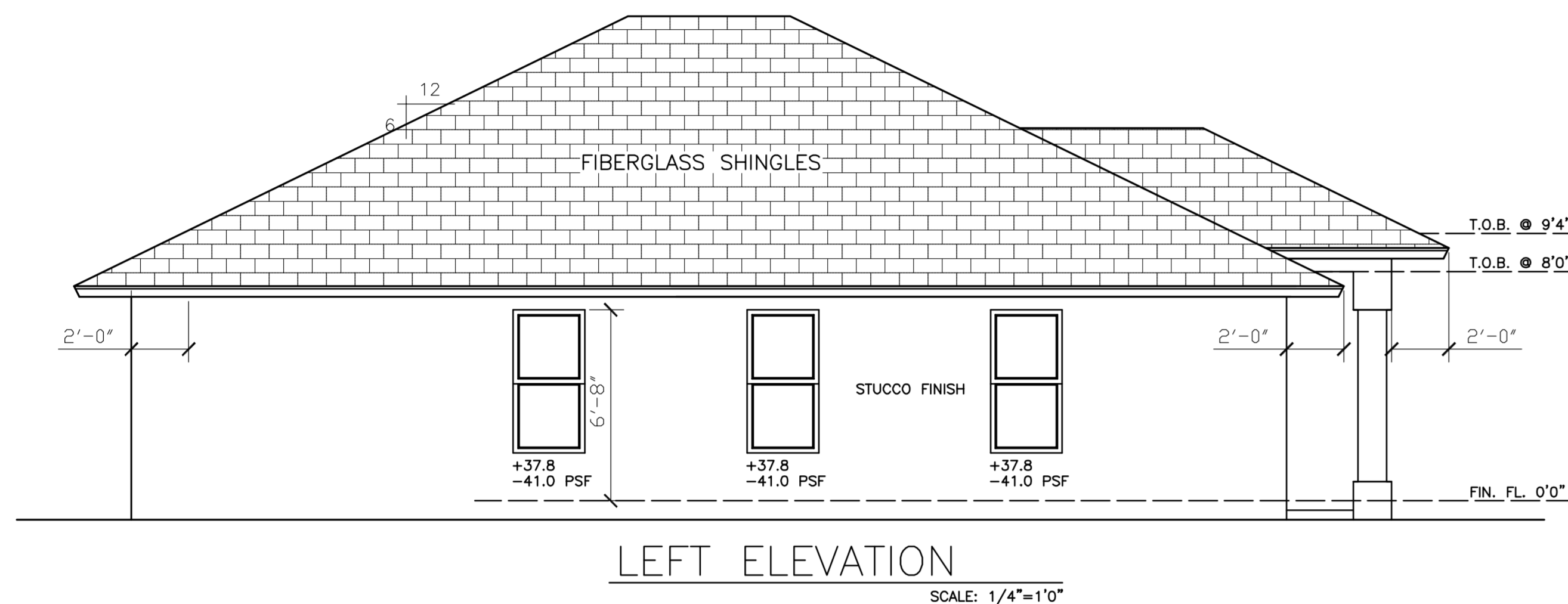
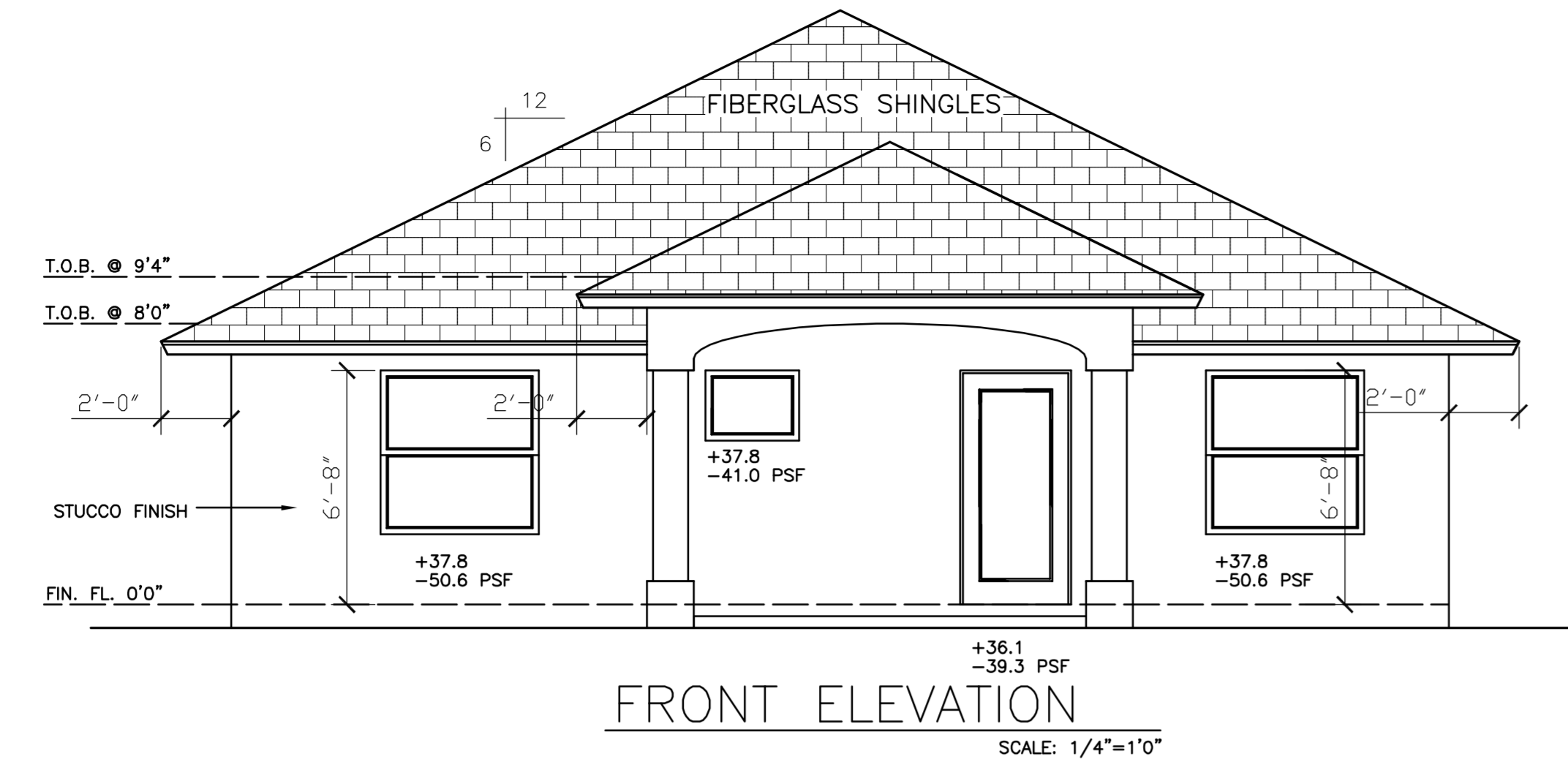


REV #	DATE	DESCRIPTION

SEAL

GENERAL CONSTRUCTION NOTES

1. ALL WOOD IN CONTACT WITH MASONRY SHALL BE PRESSURE TREATED (P.T.)
2. METAL STRAPS, CLIPS AND HARDWARE SHALL BE GALVANIZED.
3. THE CONTRACTOR, SUBCONTRACTOR, SUPPLIER, ETC., SHALL VERIFY ALL DIMENSIONS AND CONDITIONS AT JOBSITE, PLANS, SPECIFICATIONS, ETC.
4. ALL WRITTEN DIMENSIONS ON THESE DRAWINGS TAKE PRECEDENCE OVER SCALED DIMENSIONS.
5. STRUCTURAL FEATURES NOT DETAILED ON THESE PLANS WILL BE ADDRESSED BY THE ENGINEER AS CONSTRUCTION PROGRESSES.
6. SPLITTING OR CRACKING OF STRUCTURAL COMPONENTS DUE TO INSTALLATION OF HARDWARE IS NOT PERMITTED.
7. PRESSURE TREATED (P.T.) FULL LENGTH STUD AGAINST 8"x16" COLUMN BLOCK, WITH PRECUT STUD ADJACENT. ATTACH BOTH STUDS TO POURED COLUMN BLOCK WITH 1/2"x7" HILTI KWIK BOLTS, OR EQUAL @ 24" o.c. AND WITHIN 6" FROM ENDS. USE 3"x3"x1/4" STEEL WASHERS AT EACH BOLT.



WIND DESIGN DATA	
Ultimate Wind Speed:	170 mph
VASD:	132 mph
Risk Category:	II
Wind Exposure:	C
Enclosure Classification:	Enclosed
Internal Pressure Coefficient:	0.18 +/-
Shearwalls & Continuous Load Path Provided	
The Design Wind Speed was used to determine the Components and Cladding Pressures.	
All exterior glazed opening protections shall be Impact Resistant.	

SHEET LEGEND:	
ELEVATIONS	01
FLOOR PLAN	02
FOUNDATION PLAN	03
BEAM & COLUMN PLAN	04
ROOF FRAMING PLAN	05
BY OTHERS:	
ELECTRICAL PLAN <small>(DESIGN CRITERIA FOR OTHERS)</small>	E1
PLUMBING PLAN <small>(DESIGN CRITERIA FOR OTHERS)</small>	P1
MECHANICAL PLAN <small>(DESIGN CRITERIA FOR OTHERS)</small>	M1

CONSTRUCTION TYPE: TYPE V-B  
OCCUPANCY CLASSIFICATION: RESIDENTIAL USE "R-3"

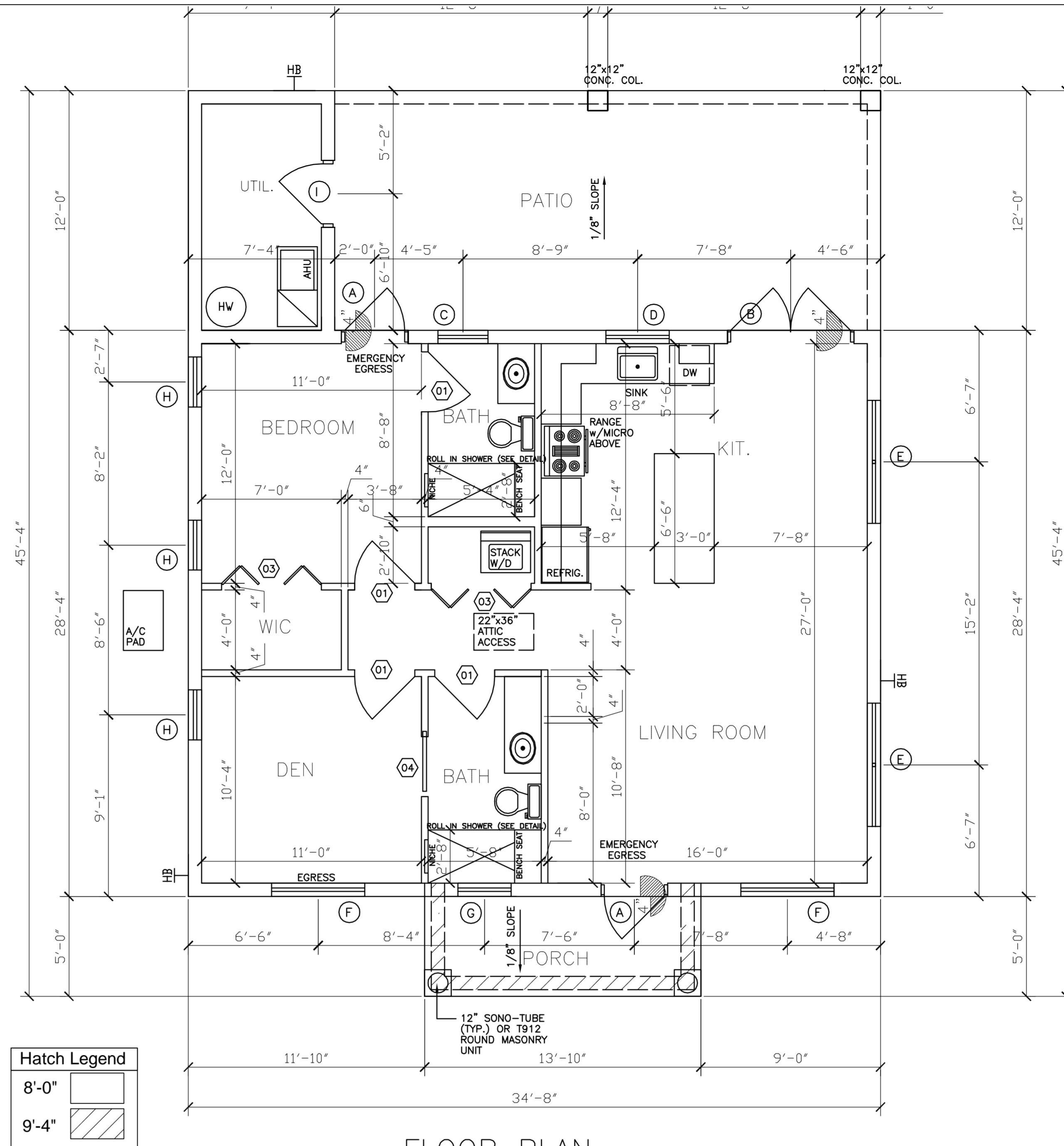
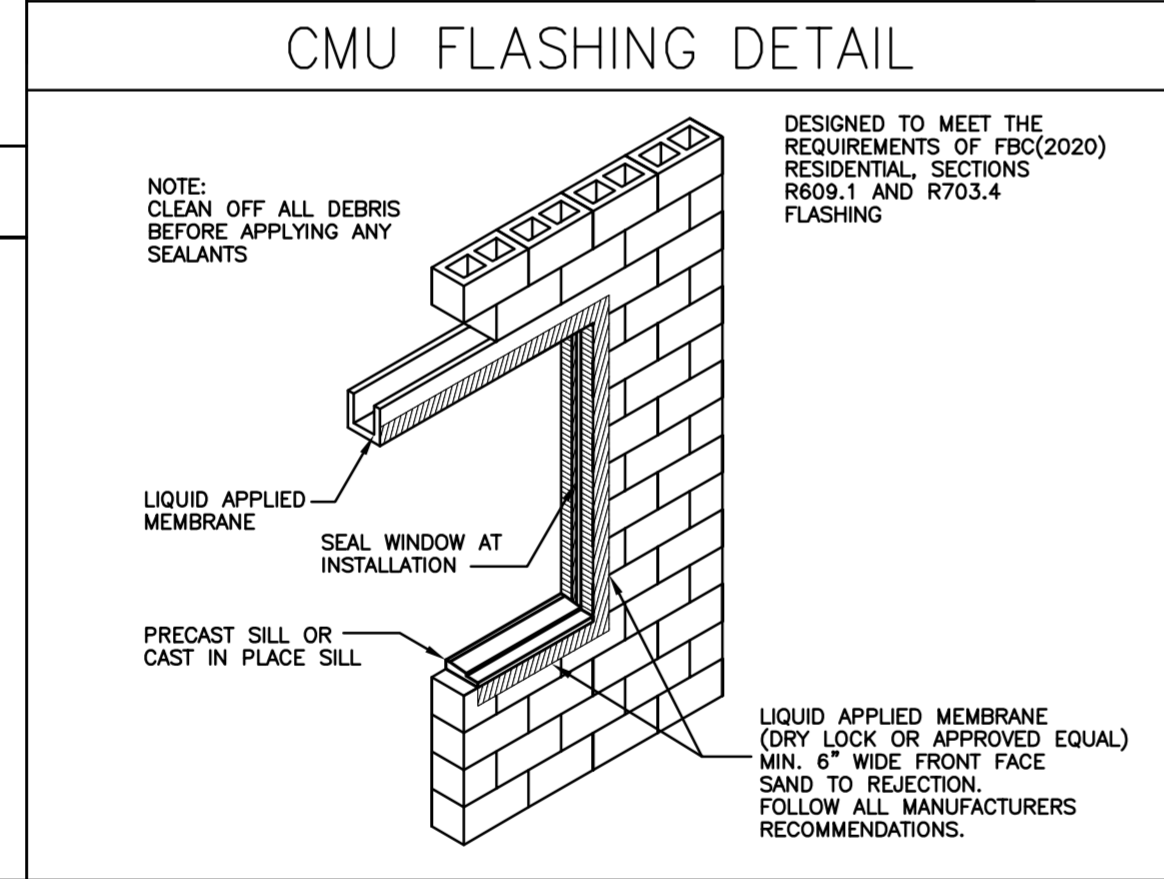
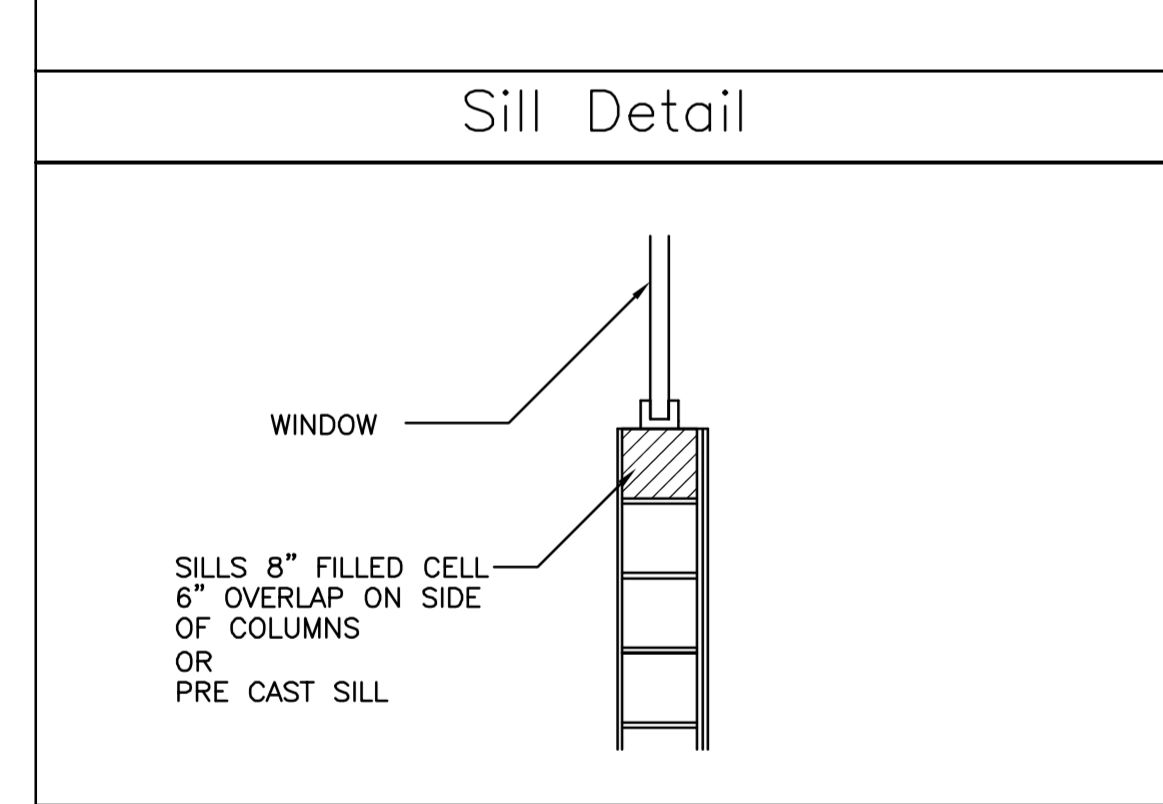
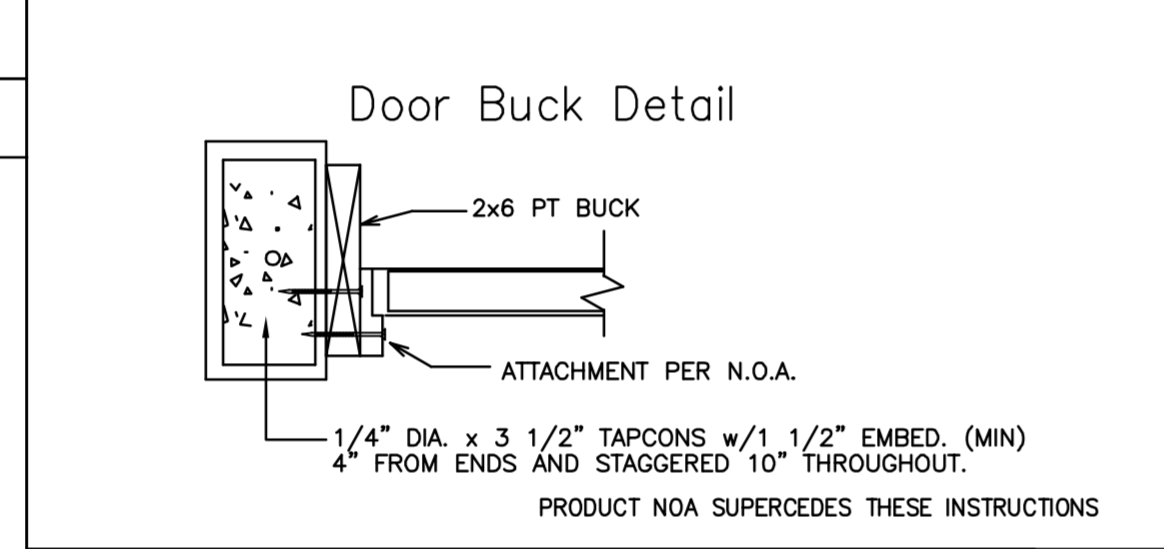
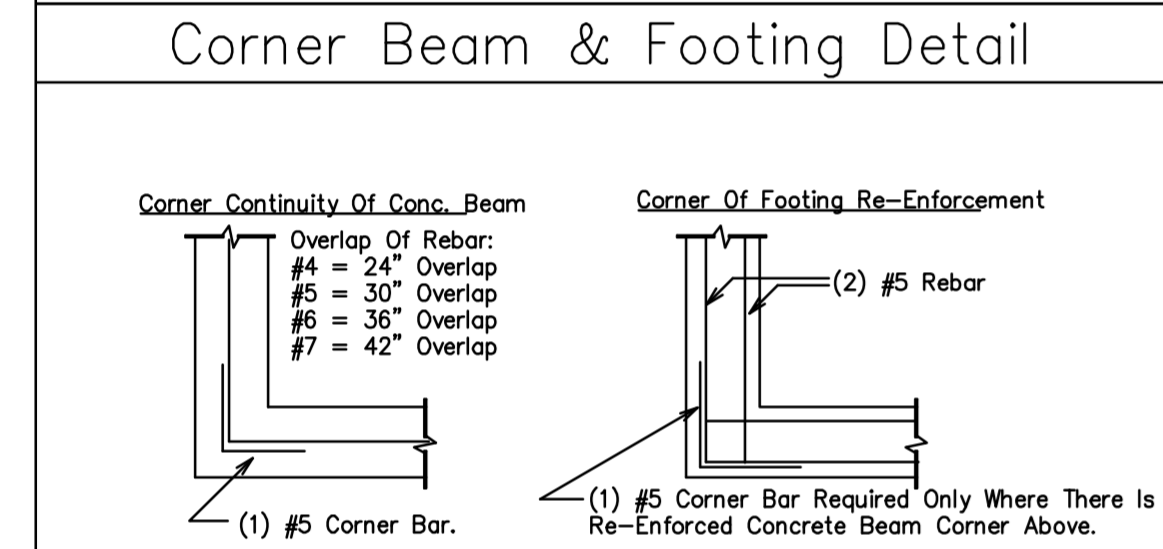
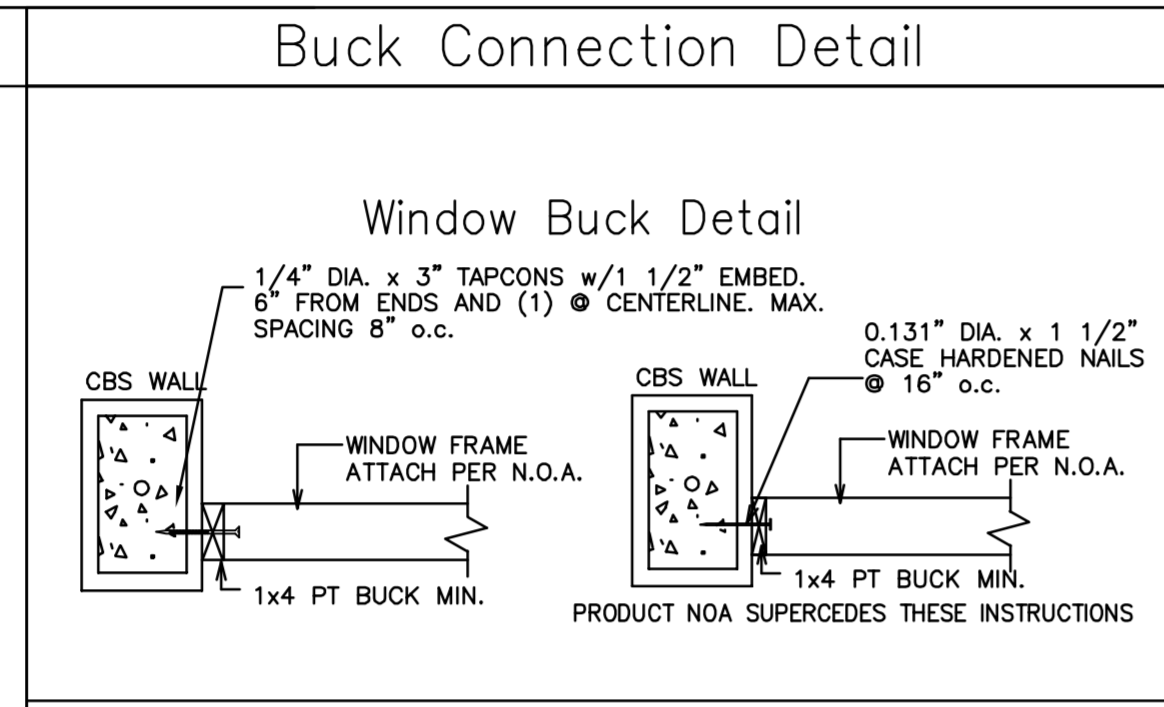
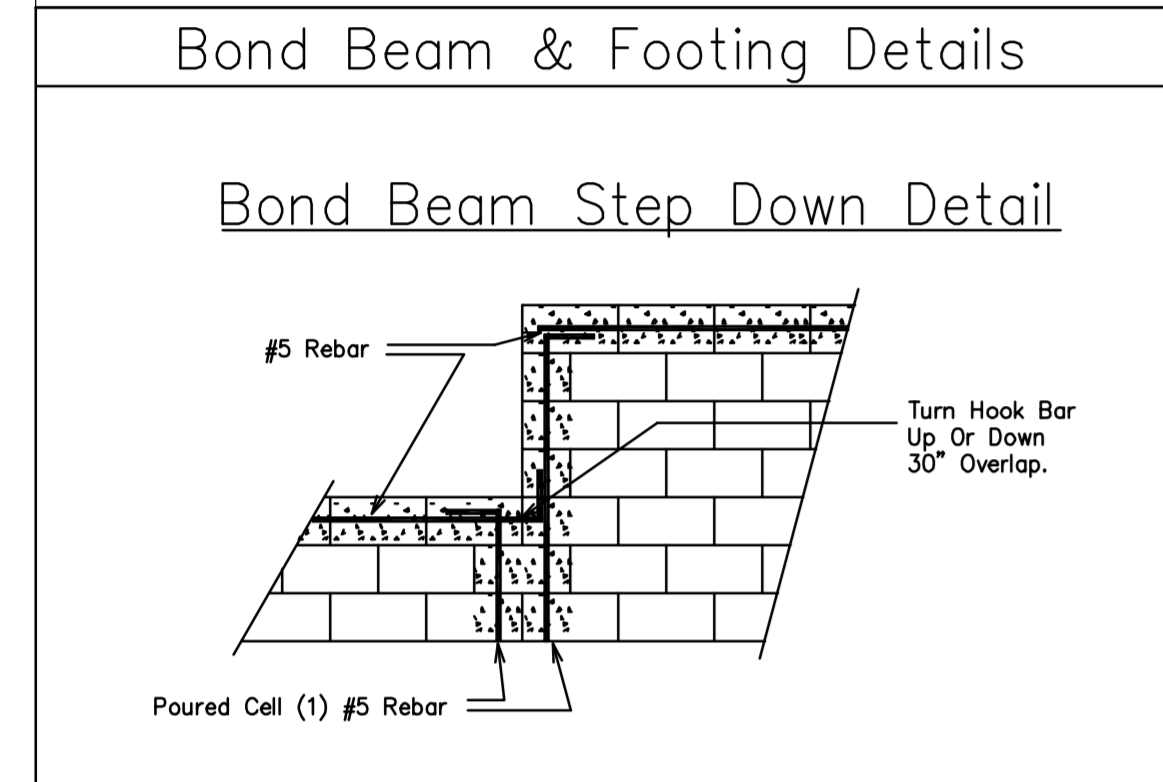
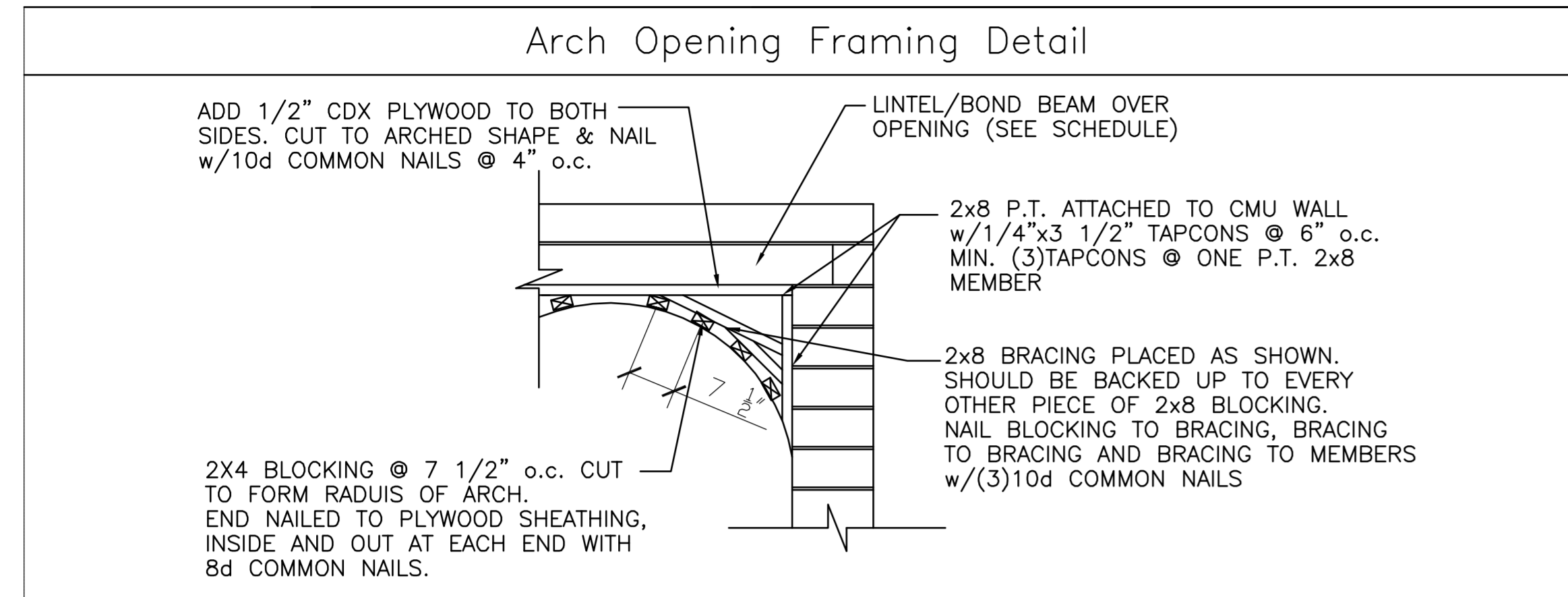
APPLICABLE CODES:	
2020 FLORIDA BUILDING CODE RESIDENTIAL, 7TH EDITION - ASCE 7-16	
NFPA70 - 2017 NEC	
2020 FLORIDA ENERGY CODE	
2020 FLORIDA ACCESSIBILITY CODE	
2020 FLORIDA PLUMBING CODE	
2020 FLORIDA MECHANICAL CODE	

LIVING AREA	983 sq. ft.
ENTRY	70 sq. ft.
PATIO/UTILITY ROOM	416 sq. ft.
<b>TOTAL AREA</b>	<b>1469 sq. ft.</b>

DATE: 10-26-22  
DRAWN BY: TK APPROVED BY: RB  
SCALE: AS NOTED  
SHEET TITLE  
SHEET NUMBER

ELEVATIONS

REVIEW SET 10-26-22  
NOT FOR CONSTRUCTION



**Hatch Legend**

8'-0"	[Hatch]
9'-4"	[Hatch]

WINDOW & DOOR (EXTERIOR) SCHEDULE					
MARK	LOCATION	TYPE	SIZE	GLASS	REMARKS
(A)	SEE PLANS	SWING - SINGLE FRENCH DOOR	3'0" x 6'8" V.I.F.	IMPACT	VERIFY M.O. SIZE SEE MANUFACTURER NOA
(B)	SEE PLANS	SWING - DBL. FRENCH DOORS	6'0" x 6'8" V.I.F.	IMPACT	VERIFY M.O. SIZE SEE MANUFACTURER NOA
(C)	SEE PLANS	SINGLE HUNG H32	27"x26"	IMPACT-TEMP/OBS	VERIFY M.O. SIZE SEE MANUFACTURER NOA
(D)	SEE PLANS	SINGLE HUNG 23	38"x38"	IMPACT	VERIFY M.O. SIZE SEE MANUFACTURER NOA
(E)	SEE PLANS	SINGLE HUNG DBL. 25 SH	74"x63"	IMPACT	VERIFY M.O. SIZE SEE MANUFACTURER NOA
(F)	SEE PLANS	SINGLE HUNG 35 EGRESS	54"x63"	IMPACT	VERIFY M.O. SIZE SEE MANUFACTURER NOA
(G)	SEE PLANS	FIXED GLASS	30"x24"	IMPACT	VERIFY M.O. SIZE SEE MANUFACTURER NOA
(H)	SEE PLANS	SINGLE HUNG H35	27"x63"	IMPACT	VERIFY M.O. SIZE SEE MANUFACTURER NOA
(I)	SEE PLANS	SWING - SINGLE FIBERGLASS FLUSH	3'0" x 6'8" V.I.F.	IMPACT	VERIFY M.O. SIZE SEE MANUFACTURER NOA

NOTE:  
 1. ALL WINDOW/DOOR FINISHES AS SELECTED BY INTERIOR DESIGNER/OWNER.  
 2. VERIFY IN FIELD ALL WINDOW/DOOR SIZES PRIOR TO FABRICATION.

DOOR (INTERIOR) SCHEDULE				
MARK	LOCATION	TYPE	SIZE	REMARKS
(01)	SEE PLANS	SWING - INTERIOR HOLLOW CORE	3'-0" x 6'-8"	
(02)	NOT USED	NOT USED	NOT USED	
(03)	SEE PLANS	BI FOLD - INTERIOR HOLLOW CORE	5'-0" x 6'-8"	
(04)	SEE PLANS	POCKET - INTERIOR HOLLOW CORE	3'-0" x 6'-8"	

NOTE:  
 1. ALL DOOR FINISHES AS SELECTED BY INTERIOR DESIGNER/OWNER.  
 2. VERIFY IN FIELD ALL DOOR SIZES PRIOR TO FABRICATION.

CONTRACTOR SHALL VERIFY ALL DIMENSIONS IN FIELD AND SHALL REPORT ANY DISCREPANCY OR INCONSISTENCIES WITH THE CONSTRUCTION DOCUMENTS TO THE ENGINEER AND ARCHITECT BEFORE CONTINUING WORK.

REV #	DATE	DESCRIPTION

SEAL